

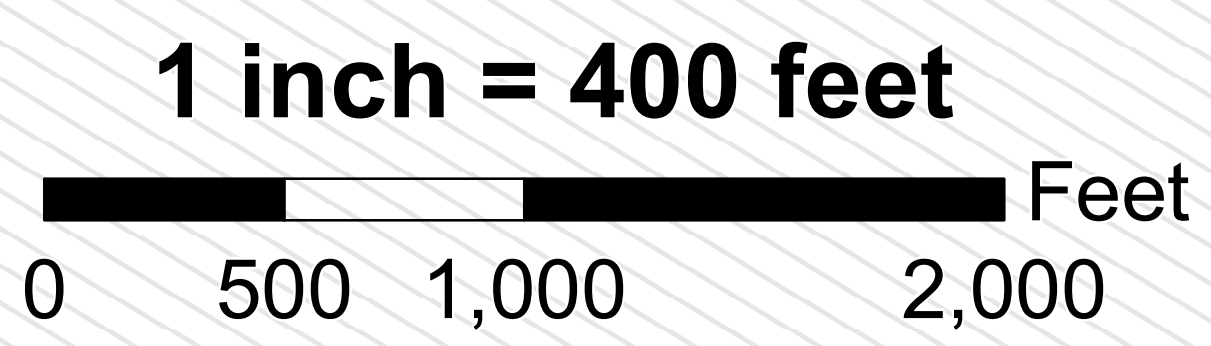
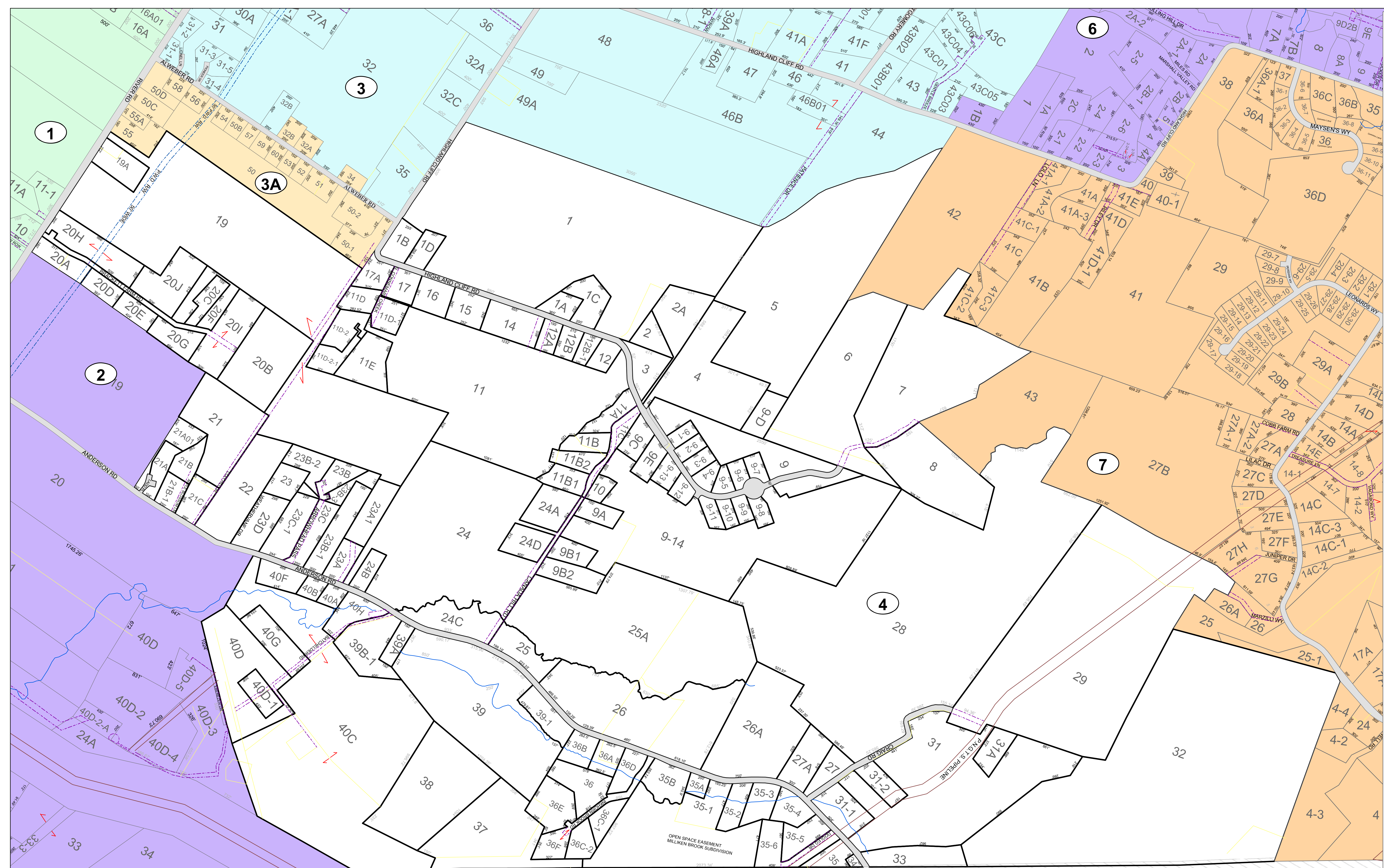
THESE MAPS ARE FOR ASSESSMENT PURPOSES ONLY AND ARE NOT FOR CONVEYANCE.  
 These town maps are based on maps originally compiled by the James W. Sewall Company.

# TOWN OF WINDHAM CUMBERLAND COUNTY, MAINE 2022 PROPERTY MAPS

SOURCES:  
 Windham Assessor's Office  
 Completion Date: April 1, 2022  
 Originated by: Windham Assessing  
 Updated by: Steve Harmon  
 Printed on: November 16, 2022  
 Not to Scale.

- Abutting Town Parcel
- Cemetery
- Condominium
- Farms/land
- Hook
- Old Property Lines
- ROW Easement
- ROW Easement PWD
- Streams
- Tie Lines
- Utility Lines
- Subject Map

Map 4



Westbrook